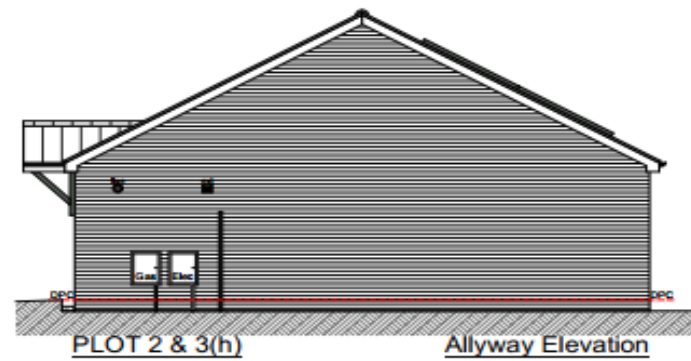
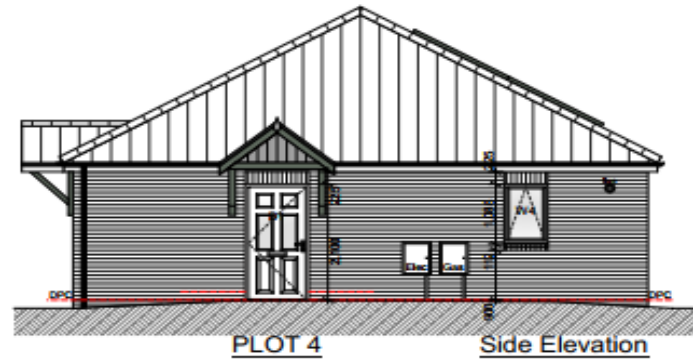
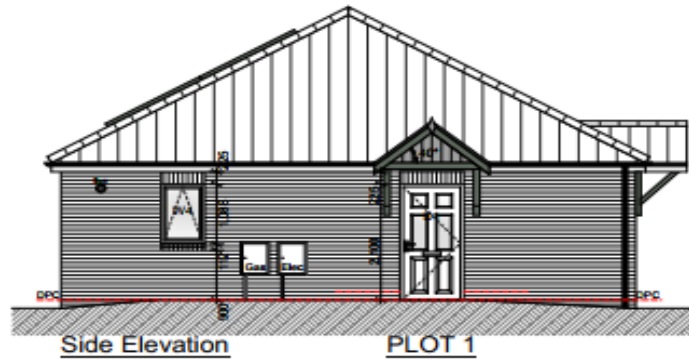
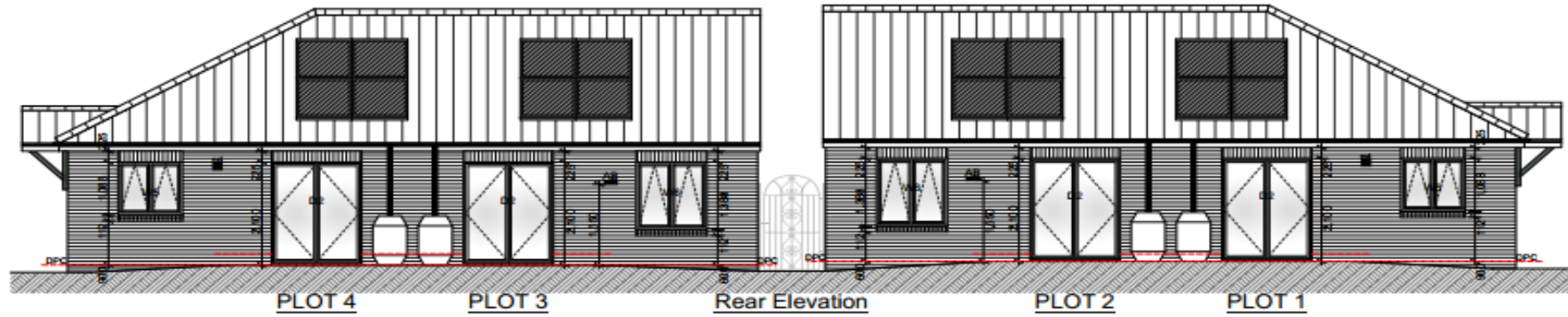
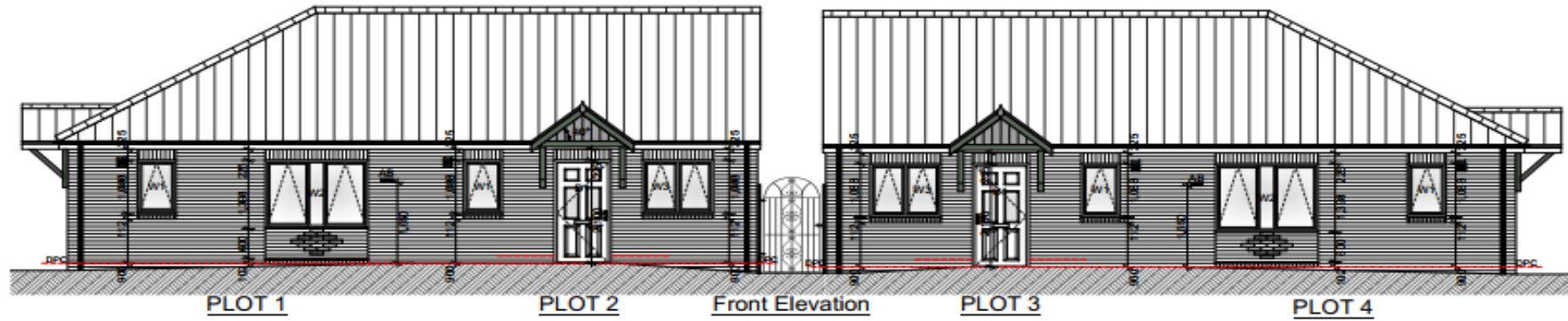




# Construction Drawing Take Off for *Bricks &* *Blocks*

Denton Green Bungalows



**NOTES:**

- 1) All windows to be set back 70mm from facing brickwork
- 2) All windows to have sloping 102mm high cant brick cills
- 3) All Windows & doors to have 225mm soldier course at head
- 4) AB denotes Rytons Multifix Air Brick with 7750mm<sup>2</sup> free area.
- 5) Solar PV panels to be designed and confirmed by specialists.

Rev B - 18/11/14 - PV panels reduced, Metal gate added & Brick feature replaced render panels.  
 Rev A - 21/10/14 - PV panels updated.

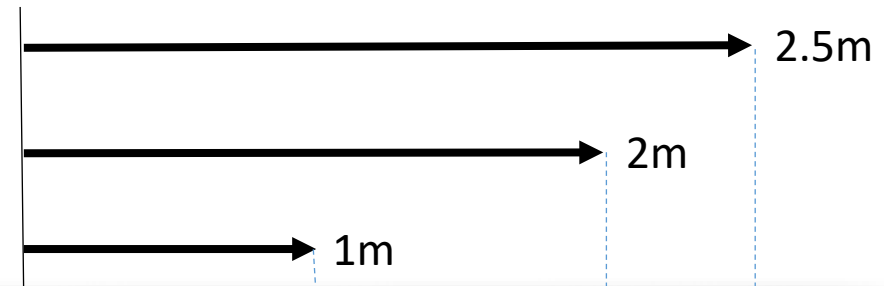
	4 no. 1 Bedroom Bungalows at 13-14 Denton Green, Nottingham	
	Elevations	
Scale : 1:50 @ A1	Date : 10/02/14	
Drwg. No. 1813/L03		Rev. B
DO NOT SCALE FROM THIS DRAWING		

# Scale of the Drawing = 1:50



	4 no. 1 Bedroom Bungalows at 13-14 Denton Green, Nottingham
	Elevation
Scale : 1:50 @ A1	Date : 10/02/14
Drwg. No. 1013/L00	Rev. B

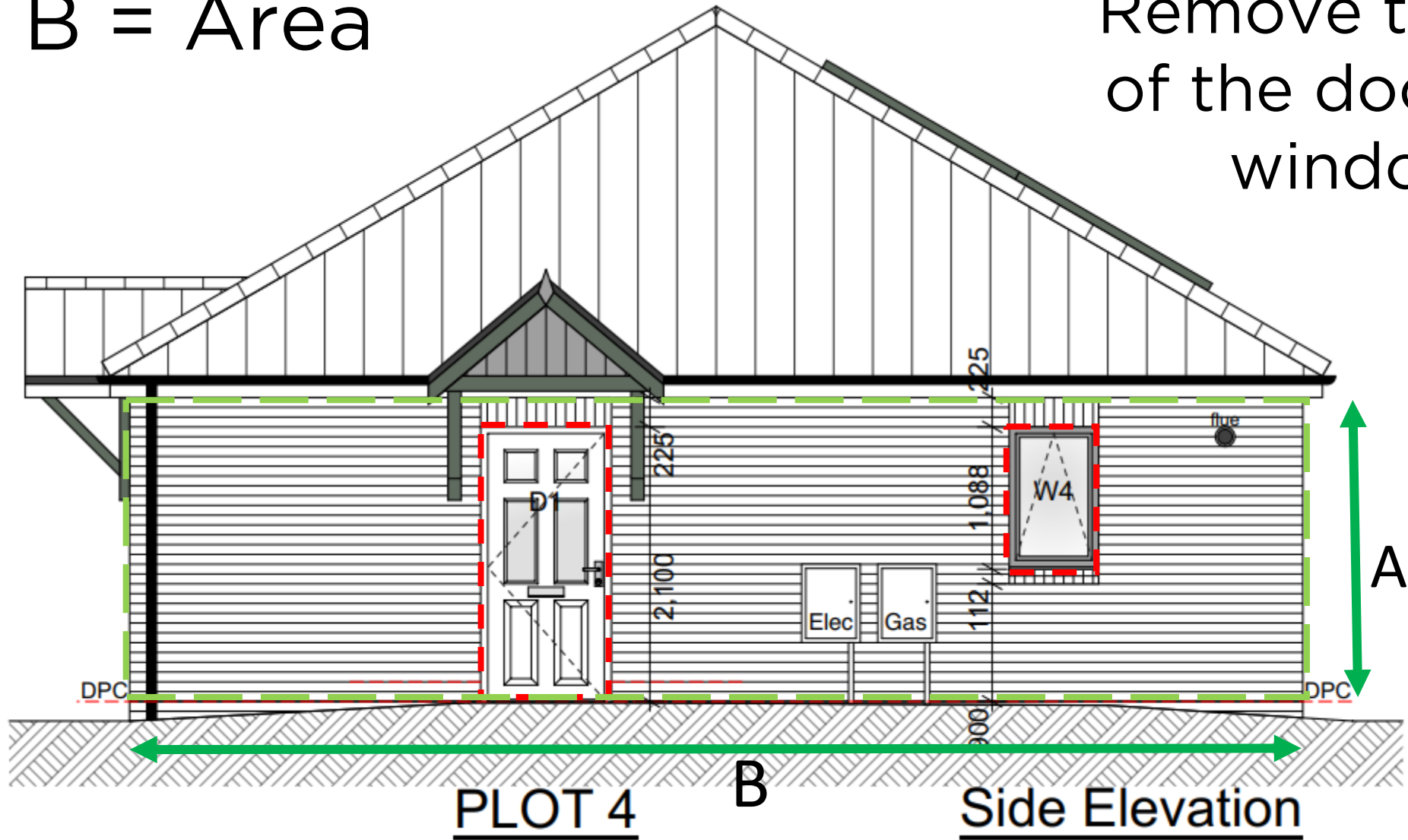
DO NOT SCALE FROM THIS DRAWING



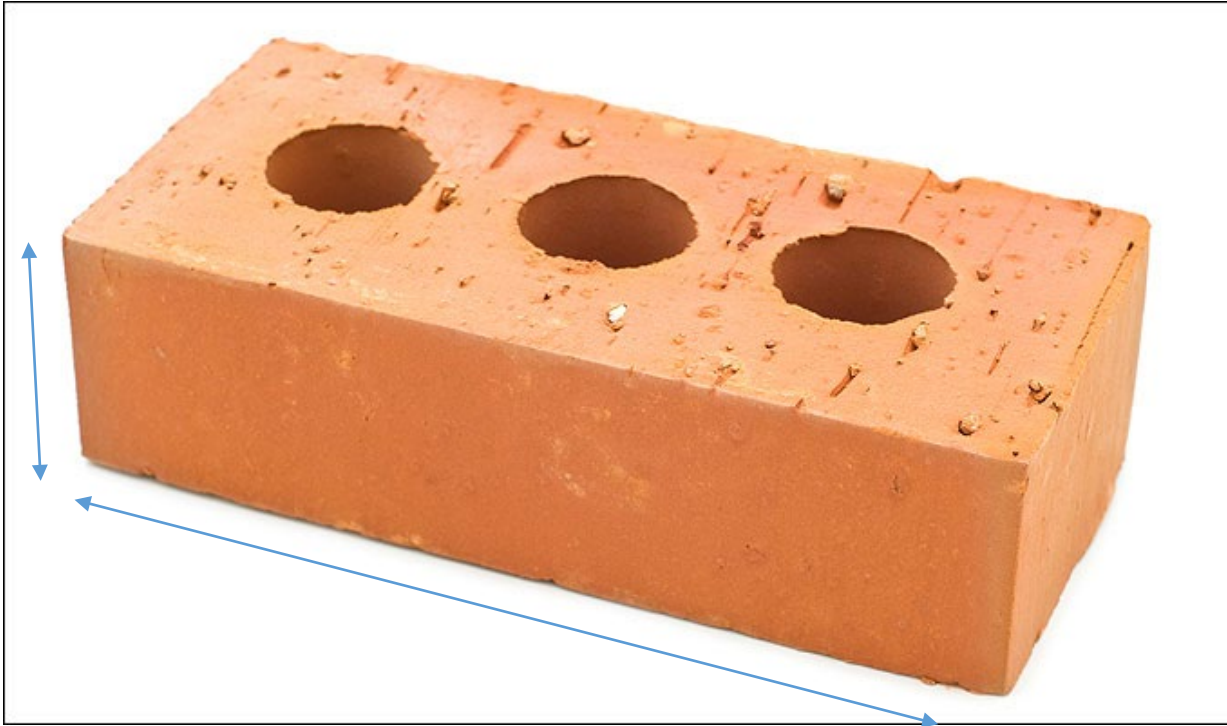
On a scale of 1:50 every 1mm on the ruler is actually 50mm for the drawing.

$$A \times B = \text{Area}$$

Remove the area  
of the doors and  
windows



# Size of Bricks and Blocks



6.5cm high x 21.5cm long (60 bricks per m<sup>2</sup> inc mortar joints)



21.5cm high x 44cm long (10 blocks per m<sup>2</sup> inc mortar joints)



# The Finished Project



# Results

## Areas

- Front Elevations  $19.96\text{m}^2 \times 2 = 39.92\text{m}^2$
- Rear Elevations  $21.25\text{m}^2 \times 2 = 42.50\text{m}^2$
- Side Elevations  $16.92\text{m}^2 \times 2 = 33.84\text{m}^2$
- Alleyway Elevations  $30.64\text{m}^2 \times 2 = 61.28\text{m}^2$
- Total Area  $177.54\text{m}^2$

## Amount of Bricks/Blocks

- 10,653 Bricks
- 1,776 Blocks